



Optimize Drilling
Production and Revenue

Trimble Groundworks Machine Control System for Drilling

Stay on target for more profit

Trimble Groundworks can enhance worksite safety, accuracy and the efficiency of your drilling operations. All day, every day, in any weather.

Realize maximum production and revenue with the Trimble® Groundworks Machine Control System for Drilling—an aftermarket, land-based, 3D drilling system for the mixed fleet operator.

- ▶ Stakeless drilling and minimal lay out reduces workload and cost
- ▶ Keep personnel safe by reducing the need to be near machines and warns the operator when entering avoidance zones
- ▶ Limit operator fatigue by reducing paperwork

Increase efficiency for ROI

Trimble Groundworks can pay for itself by:

- ▶ Using RTK for extreme precision and accuracy
- ▶ Drilling exactly to defined elevation using Auto Stop
- ▶ Navigating to inclined or vertical holes from any direction
- ▶ Reducing time and money spent on surveyors and stakes
- ▶ Logging as-built data during operation
- ▶ Reducing rework
- ▶ Reducing site visits by syncing data via Wi-Fi or cellular direct to the office

Easy to use

Trimble Groundworks was designed with the operator in mind utilizing large icons and simple workflows to allow all operators to start using system quickly.

Connectivity is profitability

Bring the office and the field together with a total solution:

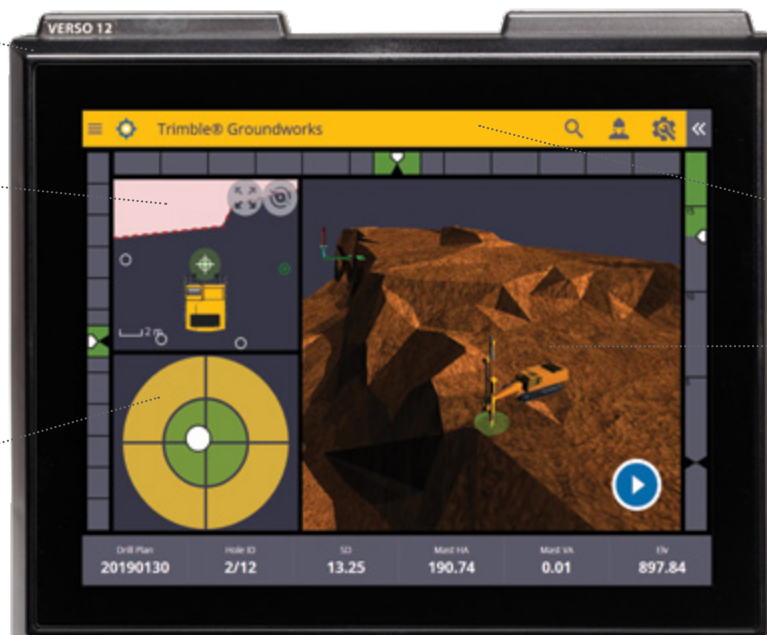
- ▶ Trimble Business Center creates and manages design data to avoid costly mistakes
- ▶ Connected Community allows design data to be shared in the cloud and ensures operators are always working with the most recent information
- ▶ Trimble Groundworks gathers as built data so Trimble Business Center can run accurate quality, production, and utilization reports

Part of the Trimble Connected Site® portfolio, Trimble Groundworks is an integrated solution that brings the office and the field together to give you less rework, more productivity, and best of all — more profitability.

Rugged VERSO 12 display

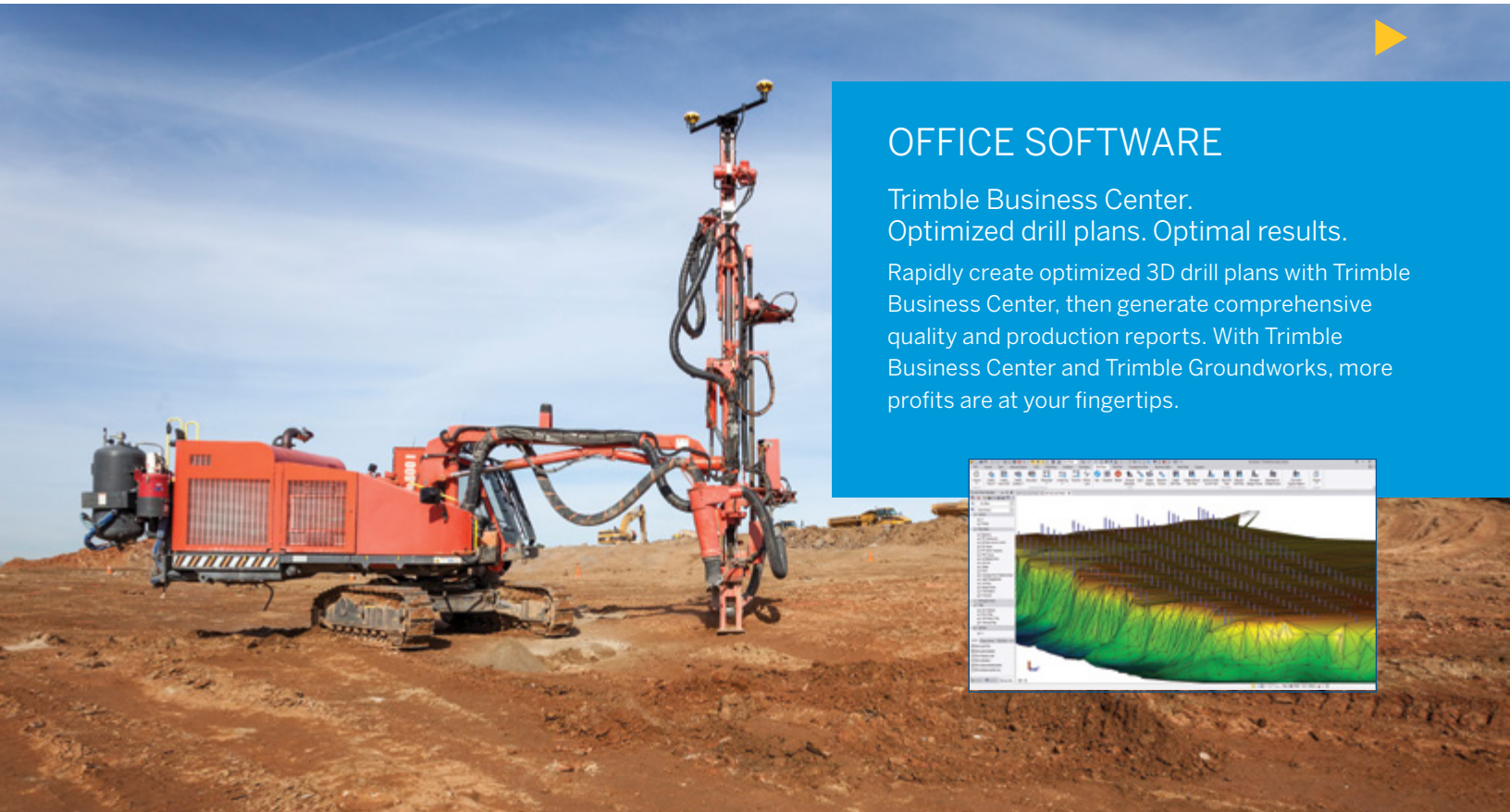
Clearly see avoidance zones for safer worksites

Configurable views



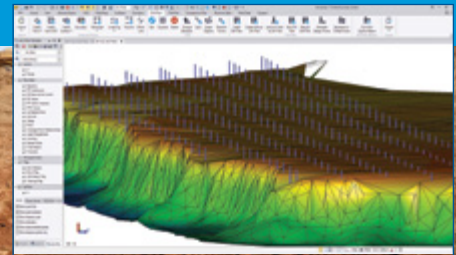
Easy to use, intuitive interface

Modern, colorful graphics



OFFICE SOFTWARE

Trimble Business Center.
Optimized drill plans. Optimal results.
Rapidly create optimized 3D drill plans with Trimble Business Center, then generate comprehensive quality and production reports. With Trimble Business Center and Trimble Groundworks, more profits are at your fingertips.



RUGGED HARDWARE FOR ALL MACHINE TYPES

Trimble antennas and receivers.
Smart and tough. A great combination.

Work in tough environments, at long ranges, with centimeter level 3D positioning with proven Trimble antennas and receivers. You get increased productivity and reduced downtime on the job. Trimble equipment is certified tough enough to withstand the shock and vibration of drilling machines.

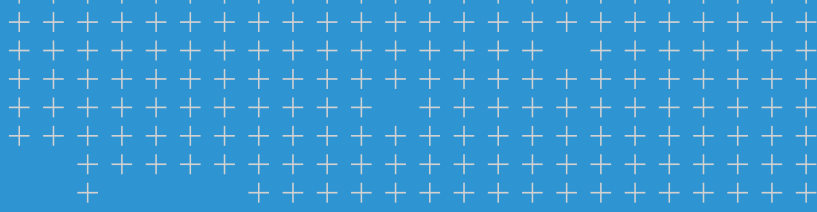
Trimble sensors for control.
Maximize efficiency. Minimize rework.

Trimble sensors give you mast tilt and depth control with Auto Stop at the target elevation for effective blasting.

Trimble VERSO 12 display.
Keep your machines working. Not waiting.

Your machines can be up and running 24/7 with the rugged and fully connected Trimble VERSO 12 and Trimble Groundworks Software. The easy-to-read touch screen makes navigation simple and quick.





Trimble: Transforming the Way the World Works

Set your sites on boundless possibilities with Trimble, the only provider of hardware and software solutions for every phase of your project's life cycle. From start to finish your project is under control. Plan with Confidence. Design with Confidence. Construct with Confidence.

① — GNSS ANTENNAS

② — DEPTH SENSOR AND PROXIMITY SWITCH

③ — TILT SENSOR

④ — TRIMBLE VERSO 12, SPS RECEIVERS, JUNCTION BOX AND I/O BOX. ADD SNM941 MODEM FOR CELL OR WIFI (OPTIONAL)

Trimble Civil Engineering and Construction
 10368 Westmoor Drive
 Westminster, Colorado 80021 USA
 800-361-1249 (Toll Free)
 +1-937-245-5154 Phone
construction_news@trimble.com

© 2015–2019 Trimble Inc. All rights reserved. Trimble, the Globe & Triangle logo, Connected Site and SITECH are trademarks of Trimble Inc, registered in the United States and other countries. All other trademarks are the property of their respective owners. PN 022482-3769A (02/19)